

## EU and UKCA Declaration of Conformity

PRODUCT TYPE: DOUBLE OVEN GLOVE

MANUFACTURER: INNOTEX MANUFACTURING

ROOM 726, 7/F., MEGACUBE, 8 WANG KWONG ROAD, KOWLOON BAY, HONG KONG, CHINA

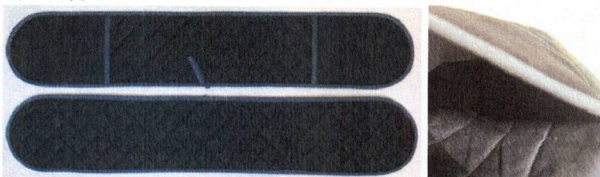
This declaration of conformity is issued under the sole responsibility of the Manufacturer

PRODUCT ID: 369520, 369521, 423653, 418652, 418653

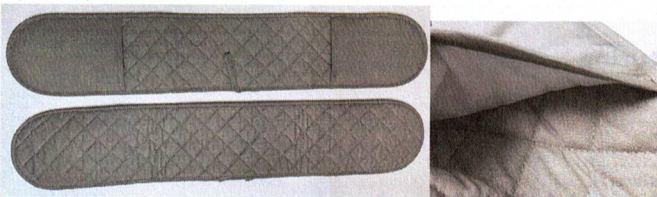
PRODUCT IMAGE/S:



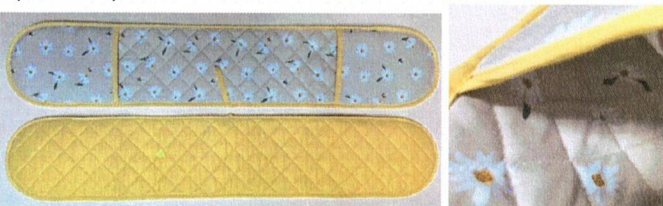
Model: 369520  
(Grey)



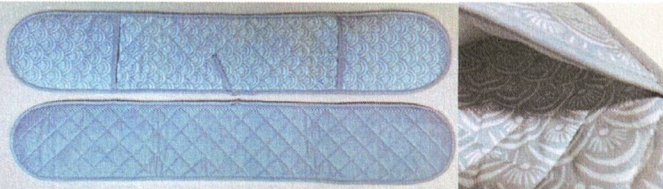
Model: 369521  
(Black)



Model: 423653  
(Natural)



Model: 418652  
(Daisy Bee)



Model: 418653  
(Geo)

The above product is in conformity with the Regulation 2016/425 on personal protective equipment, as amended to apply in GB & EU Regulation 2016/425 Personal Protective Equipment and is identical to the PPE which is subject of CE certificate no. ITASLNB 25001289 & UKCA certificate no. LEC FI00391537 issued by:

INTERTEK Italia S.p.A  
Via Miglioli, 2/A - 20063 Cernusco sul Naviglio – Milano (MI)  
Italy  
NB 2575

ITS Testing Services UK Ltd  
Centre Court, Meridian Business Park,  
Leicester, LE19 1WD,  
United Kingdom  
Approval Body AB0362

Relevant Harmonised/Designated Standards/ Technical Specifications used to which conformity is declared:

EN ISO 21420:2020+A1:2024  
EN 407:2020

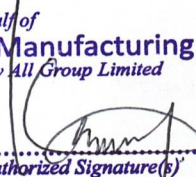
Signed for on behalf of INNOTEX MANUFACTURING

Name: KIMMY WONG

Position: DIRECTOR

Signature:

*For and on behalf of*  
**INNOTEX Manufacturing**  
*wholly owned by All Group Limited*



.....  
*Authorized Signature(s)*